

ioyn

vitra.



vitra.

vitra.



CREDITS

Design and concept:

2x4, New York

Lithography:

GZD, Ditzingen (D)

Printing:

Gerber KG Druck + Medien

Photography:

Miro Zagnoli: Cover, inside

pages: 11, 16/17, 22, 25

Marc Eggimann: 4, 18/19, 46/47

Paul Tahon together with Ronan

Bouroullec: 12/13, 20/21, 23

Eduardo Pérez: 30/31, 34/35

Gary Turnbull: 32/33

Nacasa & Partners Inc.: 36/37

Jan Bitter: 38/39, 48/49

Armin Linke: 40/41

Christian Gahl: 42/43

Benny Chan: 44–47

2012, art. no. 098 550 02

vitra.® All intellectual property rights, such as trademarks, patents and copyrights are reserved. Nothing contained in this folder may be reproduced without written permission.

**Joyn is not furniture.
Joyn is a philosophy, an
organisational system,
a way of thinking about work.**

Design: Ronan & Erwan Bouroullec

What happened to the office?

The office as we know it has disappeared.

Why? The old style workplace, with its rigid hierarchies, cannot keep pace with the speed of the global business network. It is too slow, too leaden, too resistant to change.

Technology allows us to work virtually anywhere, at any time – and 24/7 global competition requires it. But old, rigid spatial divisions get in the way, blocking interaction and disabling communication.

Flexibility - the ability to absorb change - has emerged as the single most important feature of office design. So a new kind of workspace has appeared. It's fast, light and it embraces seemingly endless organisational combinations and juxtapositions.

It is open not closed - it accepts new additions, technologies and configurations. And it works on many levels simultaneously: providing solace for the individual, support for the team, structure for the office and identity for the enterprise.

Why systems?

New kinds of systems are needed to meet the challenges that arise from these new economic and interpersonal conditions: systems that are self-sufficient and self-sustaining, adaptive to change and responsive to difference. Systems that provide coherence and ensure continuity over time as well as compatibility across space. And this is why we tailor systems to fit the diverse ambitions of the contemporary office:

To provide autonomy, creating a sense of privacy and control in a collective environment.

To foster collectivity, which serves to optimise both communication and interaction.

To ensure expandability, by producing an infinity of work conditions and relationships.

To allow multiplicity that permits all levels of work, and also accomodates diversity.

To build modularity, providing the most economical use of the elements to fulfil all working scenarios.

Meanwhile at Vitra...

We have spent the past 40 years studying the sociology of work, exploring emerging technologies, developing innovative new materials and creating new kinds of systems for new ways of working. All these years of experience have culminated in our newest, evolutionary office system: Joyn.



The platform

**Joyn condenses a diversity of spatial functions on a single plane: The platform is the office.
But Joyn is more than just a piece of office furniture, it's a management tool for cultural change.**

**With its mobile and modular structure, Joyn adapts spontaneously to changing demands and technologies.
It initiates new, productive forms of work based on communication and cooperation.**





Constant flux

Joyn is designed to be easily reconfigured by the people who use it. The platform is stable, but when in use it continually adapts to changing needs, tasks, technologies and workflows. Joyn is simple to use but as sophisticated and complex as the problems it helps to solve. The capacity of rooms, floors, even buildings becomes extraordinarily elastic.





Screens & blotters

Work areas may be spontaneously rezoned using screens and blotters. As none of the boundaries are fixed, work areas simply contract and expand as needed. Density varies with the level of activity.



The third level

The Joyn platform accommodates workers on two sides who are separated by a central cable channel that carries data, a power supply and the “third level”: aluminium profiles that serve to hold screens, organisers, lamps and special adapters for flatscreens.

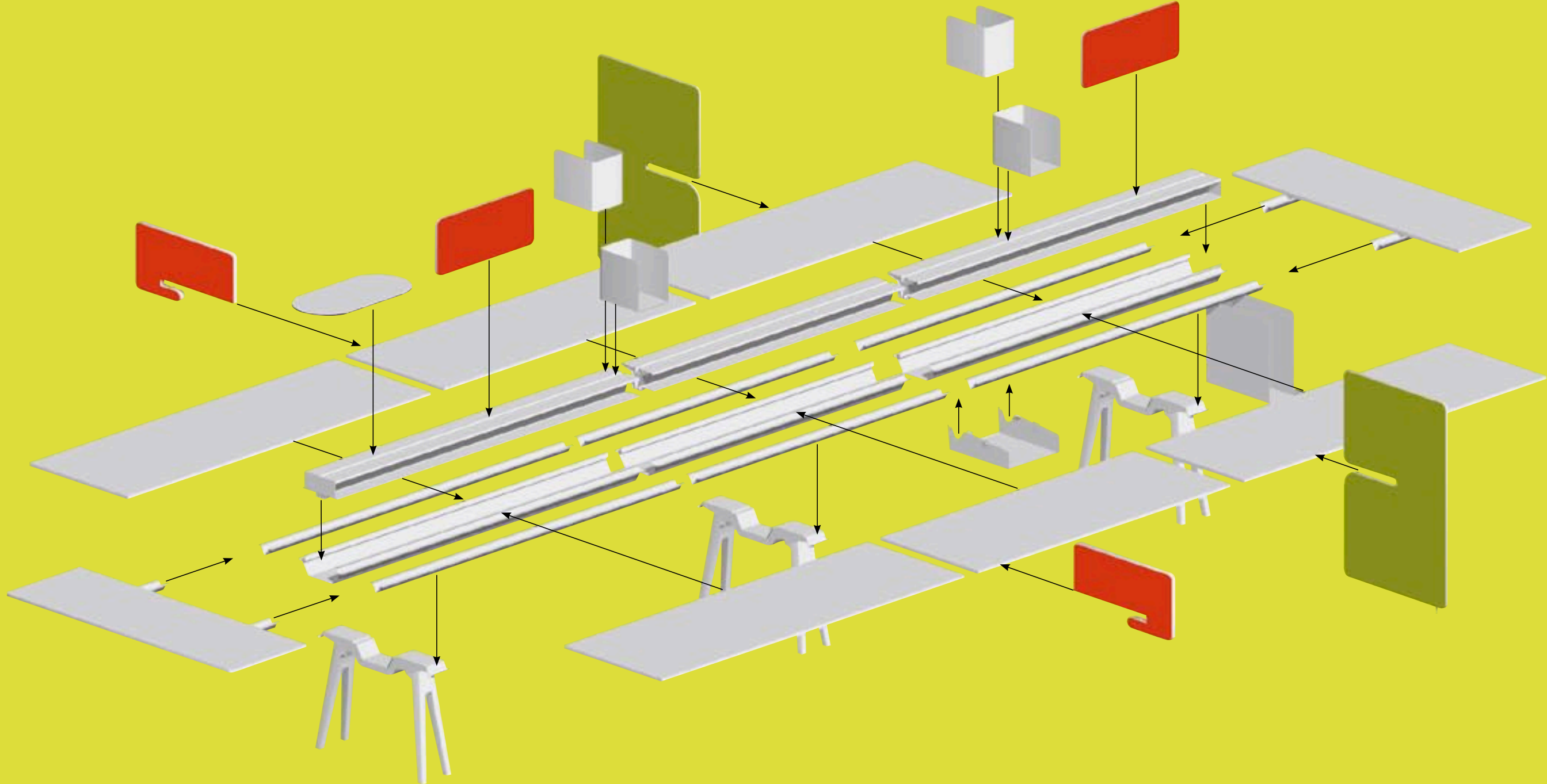


The lower level

The Joyn platform frame features containers for computers under the desktop, keeping the workspace clear. Optional height adjusters can be used to raise the table top to 74-76 cm.



Platform revealed



Joyn Conference

Meeting and working functions have blended together. Conferences may incorporate digital projection, laptops, speakerphones, mobile phones, PDAs as well as traditional paper and pencils. The Joyn bench (with embedded power and data) is the perfect surface on which to orchestrate contemporary meetings.



Joyn Single Bench

The Joyn Single Bench is the personal workplace for any decision maker in a collective environment.



Joyn Single Desk

Height adjustable Joyn Single Desks are designed for single users. Optional screens surrounding the table top provide more privacy. Direct power access facilitates 'plug and work'.





Joyn Hut

A roof-like construction with functional elements that both define and structure a given space.



Joyn environment

Joyn provides a peripheral landscape and an alternative to the interactivity of the platform.



Joyn office

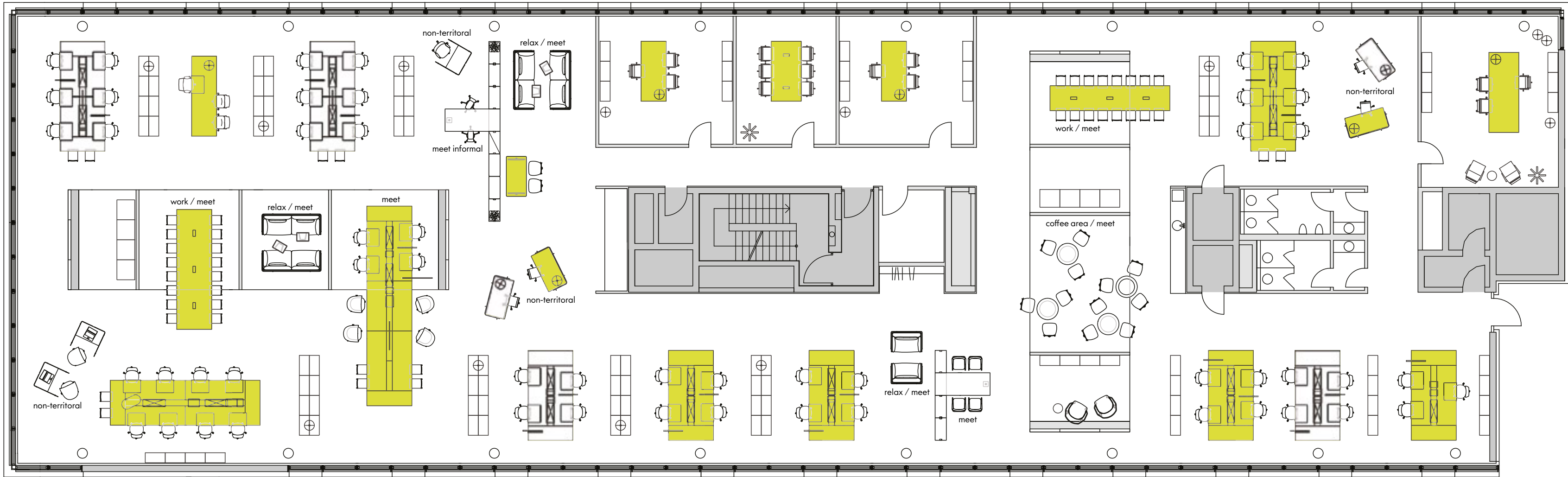
Joyn is designed for the dynamics of a contemporary office. As the space allocated for each workspace is flexible, Joyn creates a whole new approach to office planning: the same configuration can facilitate both high and low density use.

open space:

843 m²
Denisty variation: 50-70 people

Work places: 66
Territorial employees: 54
Non territorial: 12
Joyn Single Desk: 4

Meeting room open 1:
6 people
Meeting room closed 2:
16 people



Joyn references

Selection

Little, Brown Book Group. London

Novartis. Basel

Barcode-House. Munich

Mori Art Museum. Tokyo

Spectraseis AG. Zürich

Seattle Public Library. Seattle

Bread & Butter. Berlin

Fashion Institute of Design & Merchandising. Los Angeles

SLG Kunststoff. Bernau

Universiteitsbibliotheek Utrecht. Utrecht

Little, Brown Book Group.

London, Great Britain

Interior Design: Vitra Interior Design Services, London



Novartis.
Basel, Switzerland

Interior Design: SPGA Sevil Peach Gence Associates, London



Barcode-House.
Munich, Germany

Architecture: MVRDV, Rotterdam / Stadler + Partner, Munich



Mori Art Museum - UBS Art Collection.
Tokyo, Japan

Architecture: Gluckman Mayner Architects, New York



Spectraseis AG.
Zürich, Switzerland

Architecture: Urs Wagen and Tian Lutz, Zürich
Interior Design: Vitra Interior Design Services, Weil am Rhein



The Seattle Public Library.
Seattle, USA

Architecture / Interior Design:
OMA, New York (Rem Koolhaas, Joshua Ramus,
Mark von Hof-Zogrotzki)
LMN Architects, Seattle (Sam Miller)



Bread & Butter.
Berlin, Germany

Interior Design: **minimumeinrichten**, Berlin



Fashion Institute of Design & Merchandising (FIDM).
Los Angeles, USA

Architecture/ Interior Design: Clive Wilkinson Architects, Los Angeles



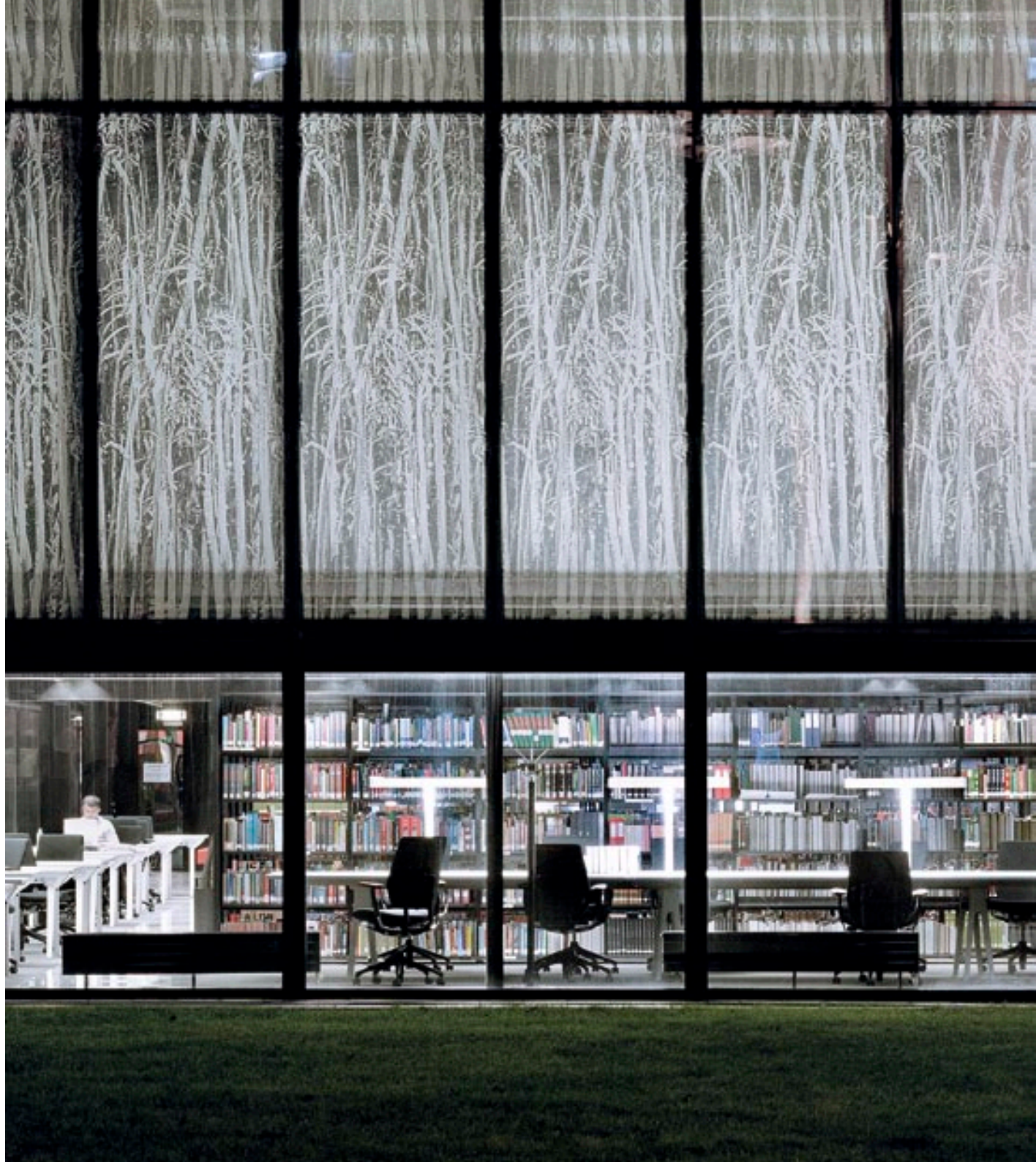
SLG Kunststoff.
Bernau, Germany

Interior Design:
Vitra Interior Design Services, Weil am Rhein



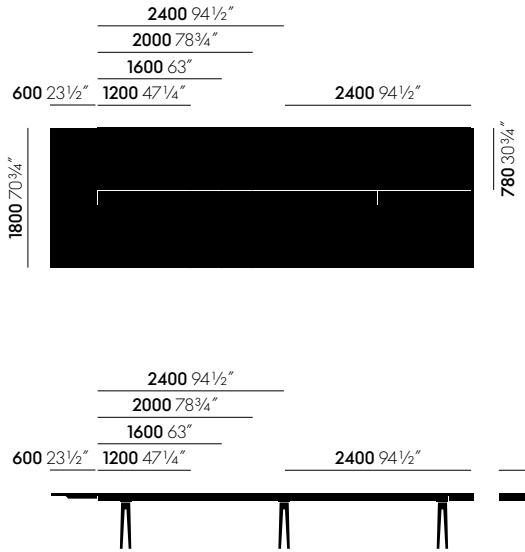
Universiteitsbibliotheek Utrecht.
Utrecht, Netherlands

Architecture / Interior Design:
Wiel Arets Architects,
Maastricht / Amsterdam

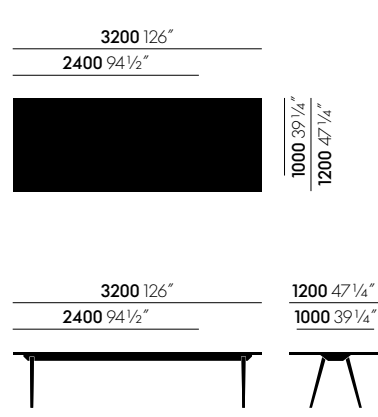


Joyn vignettes & colours

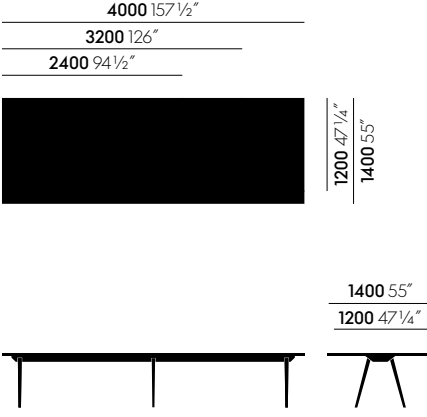
Joyn Platform



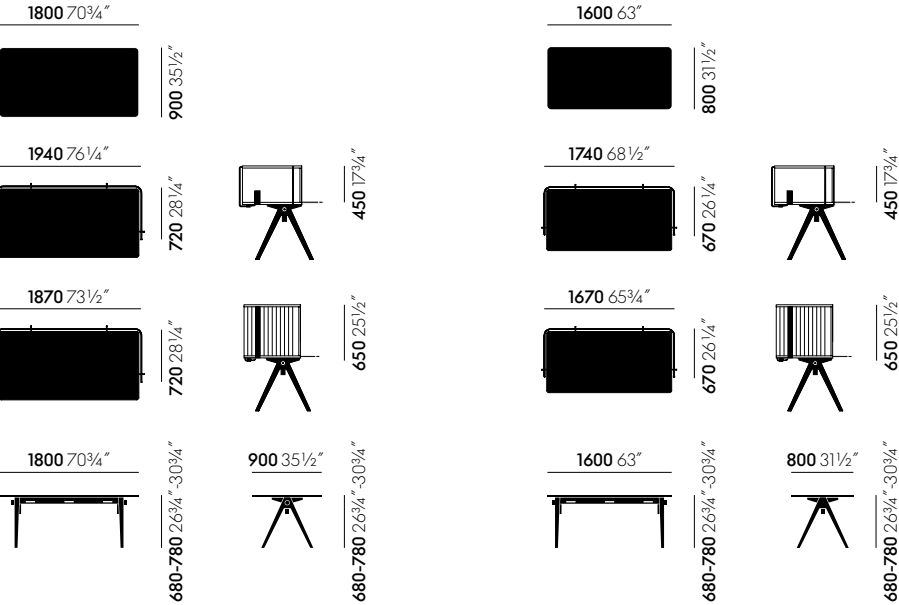
Joyn Single Bench



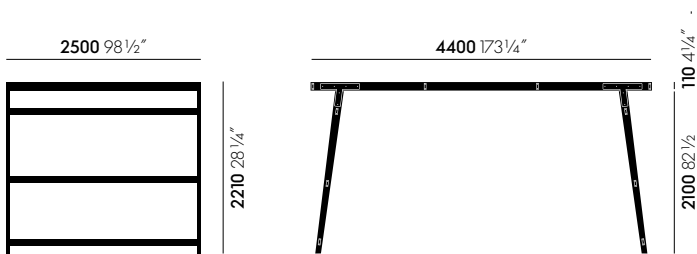
Joyn Conference



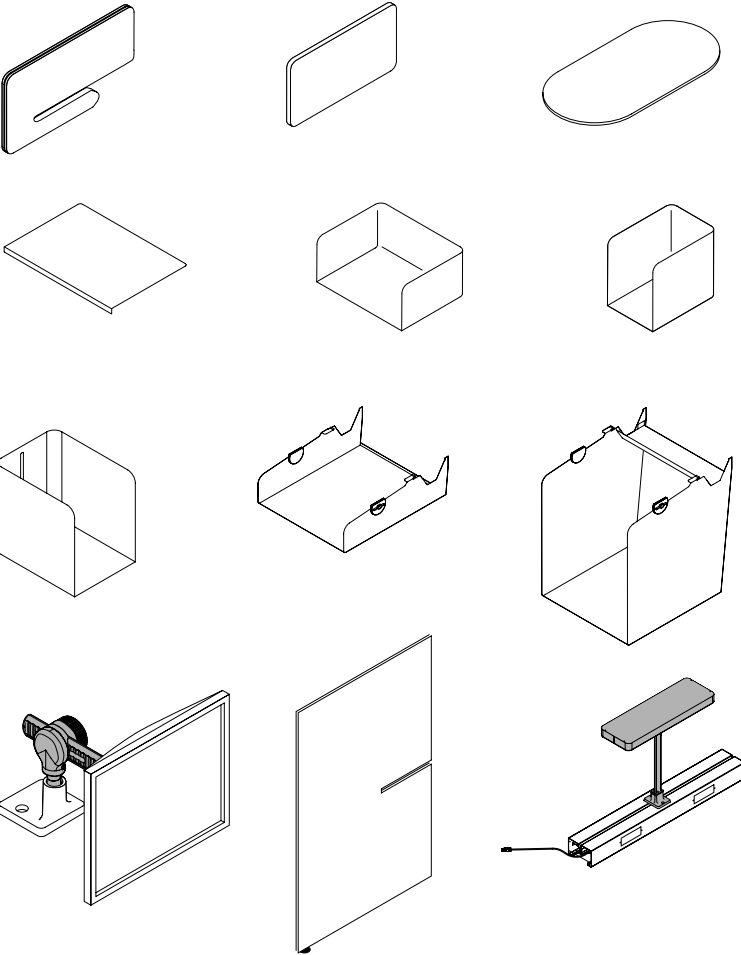
Joyn Single Desk



Joyn Hut



Organisational tools



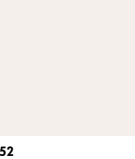
For specifications, see price list.
For technical reasons, printed pictures may deviate from actual colours.

Colours

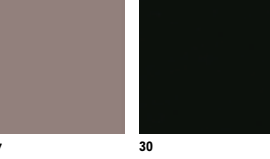
Table top



Accessories / Table base



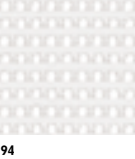
Writing surface



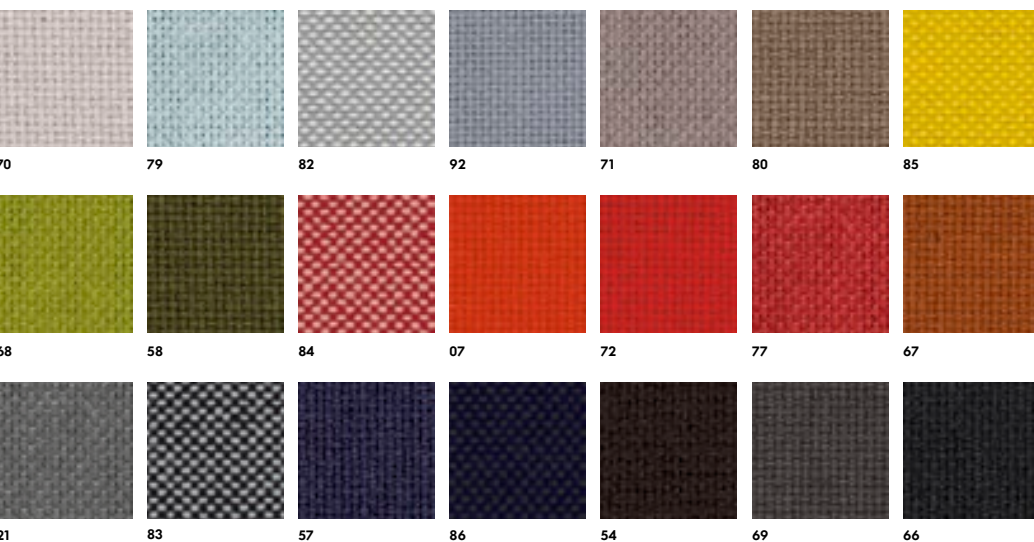
Screen, Single Desk



Hut curtain



Screen / Panel / Screen, Single Desk (Plano)



Contacts

Vitra is represented worldwide.

To find a Vitra partner in your area, go to

www.vitra.com.